

## Pilot Briefing Bern Airport LSZB – Electrify-in 2023

### **Welcome to Bern Airport, the venue of this year's Electrify-in 2023.**

Nestled in the hilly foothills of the Alps region of the Canton of Bern, in the heart of Switzerland, an attractive and versatile location for aviation has developed since its foundation in 1929. Bern Airport has already attracted attention in the past through innovative projects. Thus, it makes sense to continue on the path taken to more sustainability and to offer electrified aviation a platform.

All sectors of aviation are mapped in daily operations and thus create a certain operational complexity. The following pilot briefing serves as a guideline to be allowed to participate in the dynamic part of the Electrify-in exhibition.

### Operational aspects and integration Electrify-in

The proximity to the Federal Capital Bern (5 km northwest) was decisive for establishing the Bundesbasis in the southeastern part of the airport. Due to the good cooperation of the Federal Government, the Airport Directorate and the Electrify-in, this location could be used as an event site.

Furthermore, in the immediate vicinity of the static exhibition is the Bern base of the Schweizerischen Rettungsflugwacht REGA.

The following aviation activities are expected on the weekend of 9 & 10 September 2023:

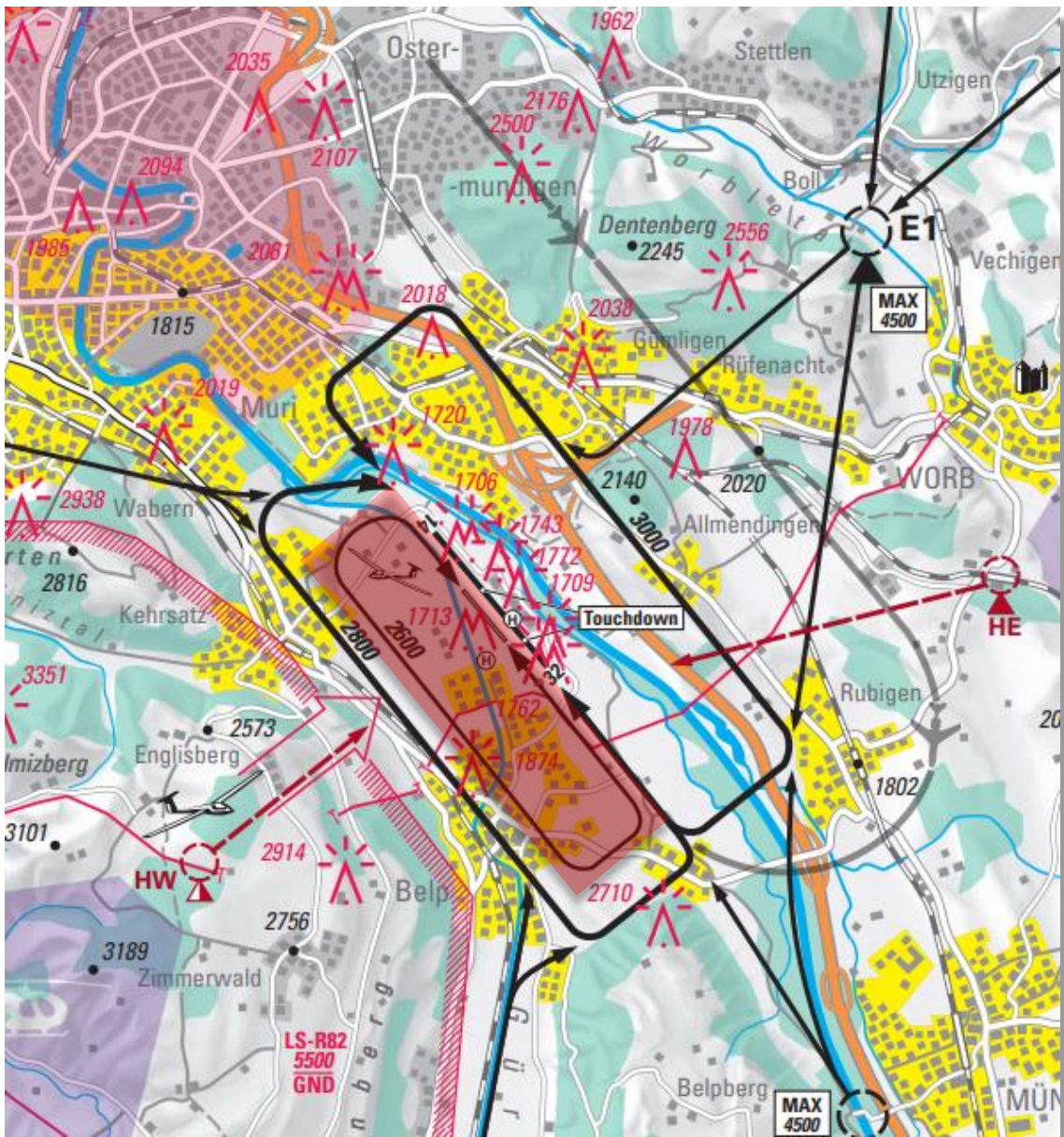
- Gliding activities west of the concrete surface runway
- Scheduled/charter flights e.g. Helvetic Airways with Embraer E190-E2
- Business Aviation
- Flight training single- and multi-engine fixed-wing aircraft
- Flight Training Helicopter
- Sightseeing flight operations fixed-wing aircraft/helicopters
- REGA Flight Operations
- Air Force Transport Operations

## Flight operation

Since the flying part of the Electrify-in is not a flight event in the true sense, we are integrating our activities into the existing flight operations of Bern Airport.

The grass runway (**temporarily closed**) located in the west of the airport has the ideal circuit geometry to present the aircraft optimally to the spectators. The entry and excursion into this defined "demonstration circuit" takes place directly after take-off or before landing. **Take-off and landing are always carried out on the concrete surface runway.**

## Demonstration circuit



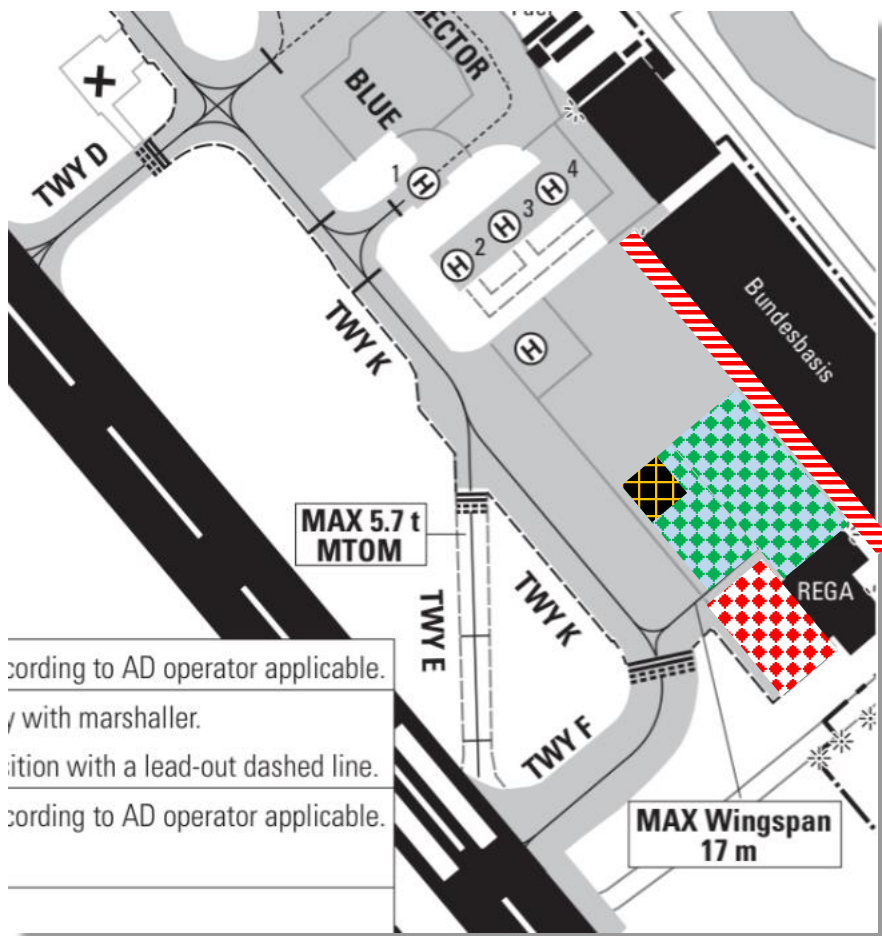
*Demonstration circuit «not for operational use»*

## Ground operation

Despite the generous space available on the event site, detailed coordination with the partners in our immediate vicinity is required. Parts of the Bundesbasis as well as the REGA provide an operational 24-hour flight readiness. Thus, activities are to be expected at any time.





It is possible to taxi directly to the event site upon arrival. A shuttle service is available for transport to document control.

## Overview Of The Event Grounds

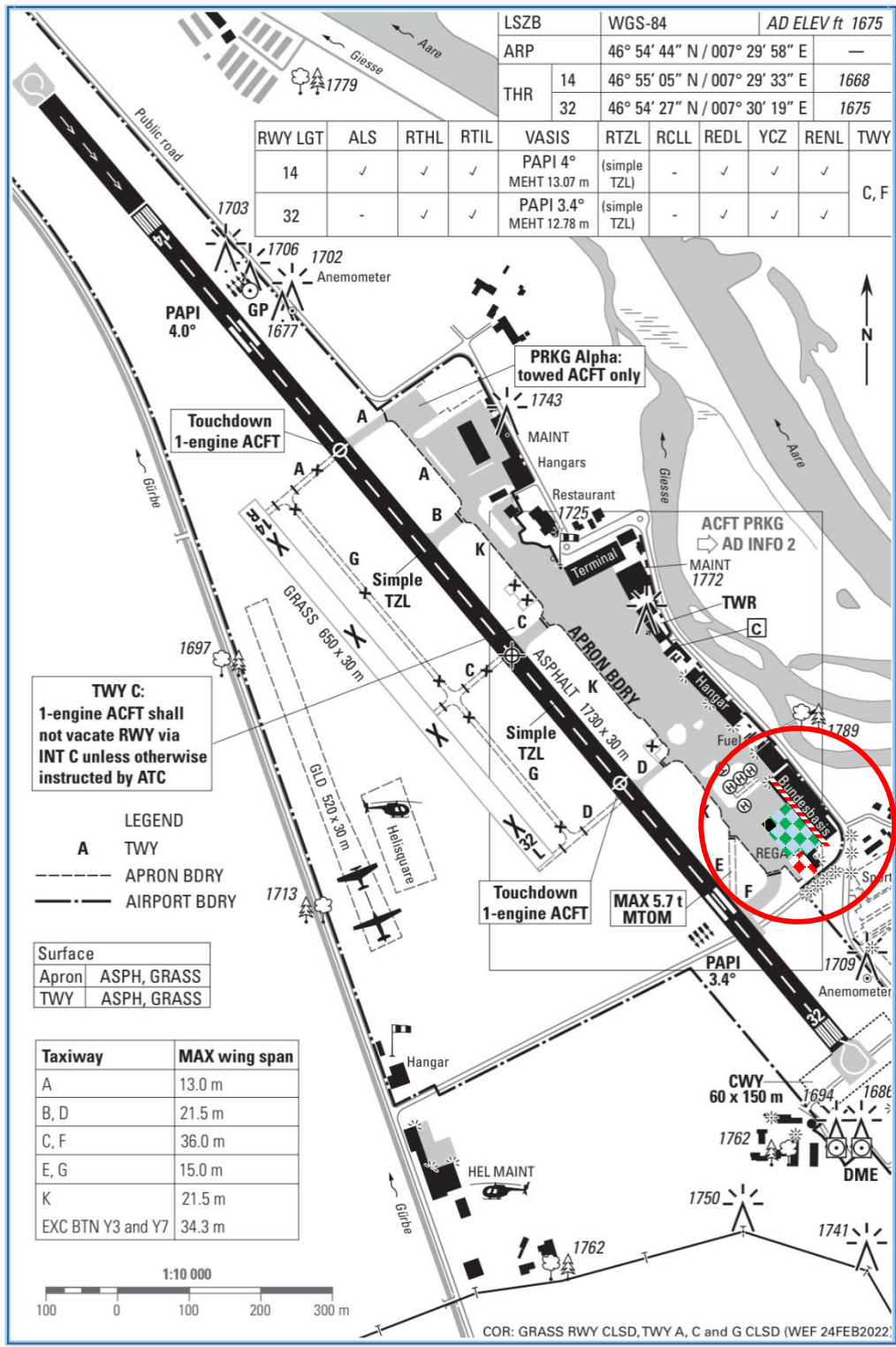


According to AD operator applicable.  
 with marshaller.  
 position with a lead-out dashed line.  
 according to AD operator applicable.

Overview Of The Event Grounds *«not for operational use»*

-  «Static Display» Electrify-In
-  Emergency passage
-  REGA
-  «Customs» parking





Overview Bern Airport «not for operational use»

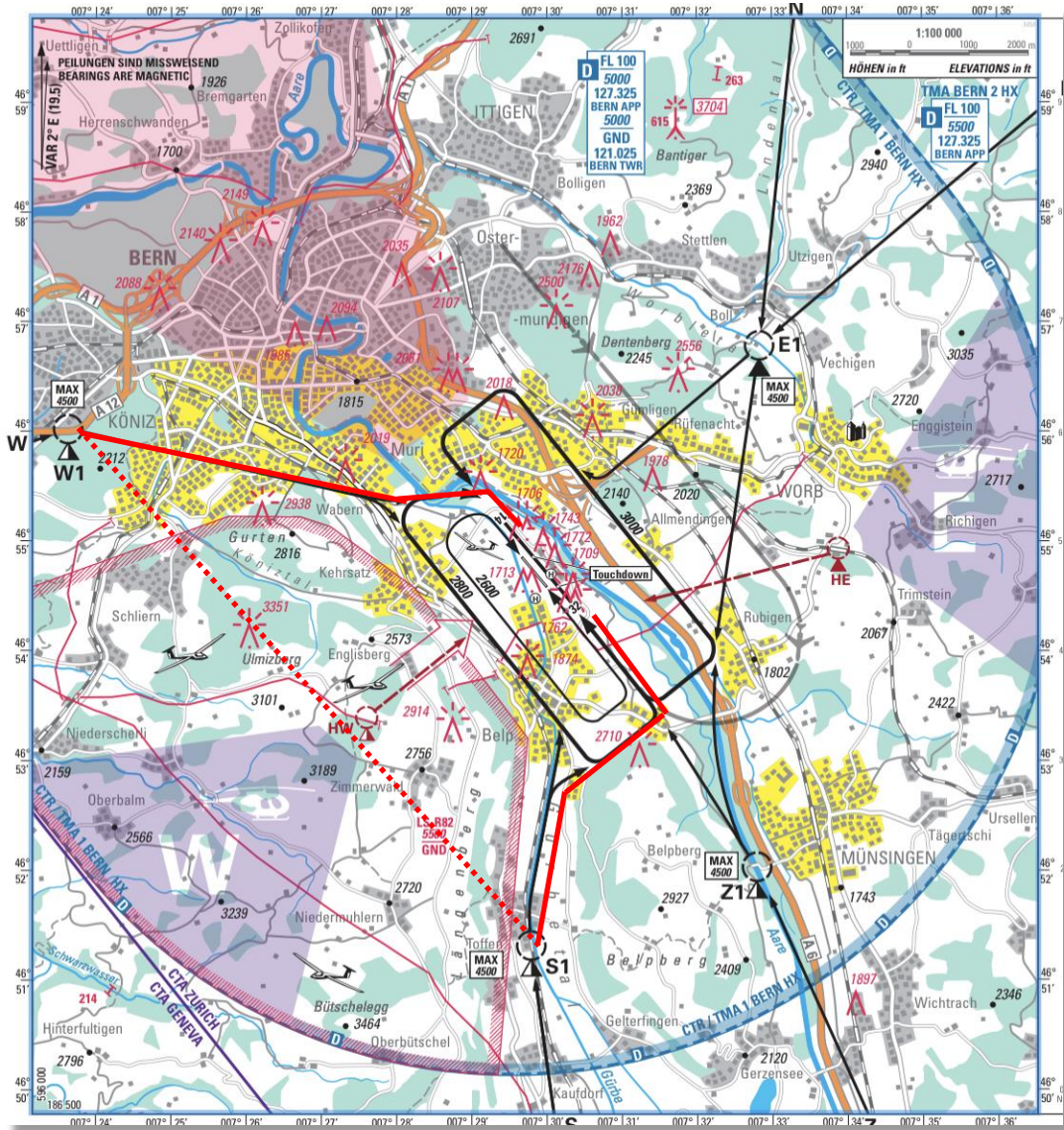
## Operational Highlights

In order to guarantee smooth and coordinated air traffic, the following points must be observed:

- In order to identify yourself as a participant in the Electrify-In, the addition "Electrify-In" should be added immediately after the identifier when you first make contact (entry and exit).  
E.g. «BERN Tower, HB-XYZ, Electrify-In, ...»
- To leave runway 14/32, Taxiway C may only be used with permission or on the instructions of the TWR.
- Runway 14 is usually left via Taxiway D .
- Runway 32 is usually left via taxiway A or B .
- After leaving the runway, it is allowed to roll independently to the assigned parking position.

## Sightseeing Flight

In order to ensure an efficient sightseeing flight operation, a **predefined flight route** was created in cooperation with Bern Airport and Skyguide . This prevents possible delays during the flight. Spontaneous route changes between W1 and S1 can be coordinated with Bern Tower at any time.



*Sightseeing route «not for operational use»*



## Requirements for the pilots

LSZB is a Skyguide-controlled airport, so all pilots must have the appropriate national and international qualifications. All formalities for crossing the border can be processed at the customs clearance office.

Required documents:

- Passport, identity card
- Aircraft papers
- Valid license for the corresponding aircraft
- Valid medical certificate (Medical, varies depending on the license)
- Valid Flight Radio & Speech Certificate (English)
- **Authorisation issued by the Federal Office of Civil Aviation (FOCA) for temporary flight operations within Switzerland with non-approved aircraft. This must be handed over to the **Coordinator Flight-Ops** no later than **two weeks** before the event . The following link serves as a guide to the approval process.**

<https://www.bazl.admin.ch/bazl/de/home/fachleute/luftfahrzeuge/lufttuechtigkeit-flugmaterial/sonderbewilligung-fuer-auslaendische-luftfahrzeuge-der-sonderkat.html>

[In case of non-existent documents, please contact me early](#)

All pilots are required to participate in the daily Flight Ops Briefing.

- Flight Ops Briefing: **Sa & So 09:00 LT Welcome Desk**

[The "Pilot Briefing Bern Airport LSZB – Electrify-in 2023" does not replace individual flight preparation](#)

Daniel Wenger

Coordinator Flight-Ops & eTrophy

[daniel.wenger@electrify-in.ch](mailto:daniel.wenger@electrify-in.ch)

+41 79 962 83 91